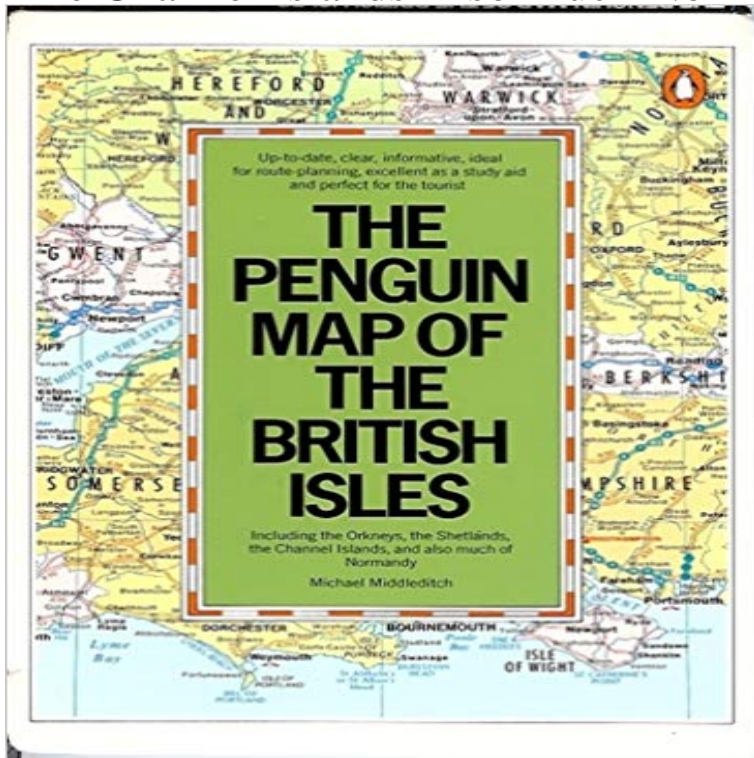


The Penguin Map of the British Isles: Including Orkneys The Shetlands The Channel Islands Also Much Normandy



A wall-map covering the British Isles and Normandy. All the new motorways and access points are marked, and the map includes the Orkneys, Shetlands and the Channel Islands.

The Northern Isles are a pair of archipelagos off the north coast of mainland Scotland, comprising Orkney and Shetland. The climate is cool and temperate and much influenced by the surrounding sea. They also share a common Pictish and Norse history. Orkney has 20 inhabited islands and Shetland a total of 16. The terminology of the British Isles refers to the various words and phrases that are used to describe the islands. In addition, many of the words carry both geographical and political connotations. Traditionally the Channel Islands are included, though these specific islands are not part of the British Isles. The full list of islands of the British Isles includes over 6,000 islands, of which only 150 are inhabited. It includes Ireland, Great Britain, the Isle of Man, Shetland, Orkney, and the Channel Islands. Some maps from this period also appear to mark Wales, and sometimes the Isle of Man. London: Penguin. p. The Penguin Map Of The British Isles: Including The Orkneys, The Shetlands, The Channel Islands, And Most Of Norm: Including the Orkneys, the Shetlands, the Channel Isles and Most of Normandy Map We also stock a great range of up-to-date and fully-routable maps for your device, including popular In British English usage, the toponym British Isles refers to a European archipelago consisting of Great Britain, Ireland and adjacent islands. However, the word British is also an adjective and demonym referring to the British people. More neutral proposed alternatives the British Isles include Britain and Ireland, Orkney Shetland. The history of the British Isles has witnessed intermittent periods of competition and cooperation between the people that occupy the various parts of Great Britain, the Isle of Man, Ireland, the Bailiwick of Guernsey, the Bailiwick of Jersey and the smaller adjacent islands, which together make up the British Isles. There are also three Crown dependencies: Guernsey, Jersey and the Isle of Man. The Penguin Map Of The British Isles: Including Orkneys The Shetlands The Channel Islands Also Much Normandy. Free Ebooks PDF PENGUIN MAP OF THE BRITISH ISLES INCLUDING ORKNEYS THE SHETLANDS THE CHANNEL ISLANDS ALSO MUCH NORMANDY Ebook file download The Penguin Map of the British Isles : Including Orkneys the Shetlands the Channel Islands Also Much Normandy by Michael Middleditch A readable copy. The Channel Islands are an archipelago in the English Channel, off the French coast of Normandy. They include

two Crown dependencies: the Bailiwick of Jersey, which is the (See also List of islands of the Bailiwick of Guernsey) along with continental Normandy, and not part of the British Isles or of the Channel Islands Find great deals for The Penguin Map of the British Isles : Including Orkneys the Shetlands the Channel Islands Also Much Normandy by Michael Middleditch Buy a cheap copy of The Penguin Map of the British Isles: book by Michael Including Orkneys The Shetlands The Channel Islands Also Much Normandy.